

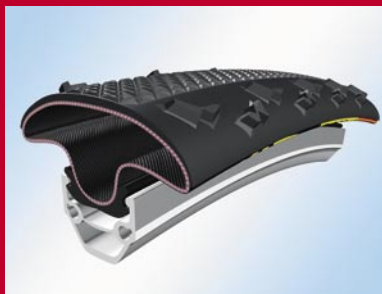


TUFO CXC1

new

World innovation on the MTB tire scene

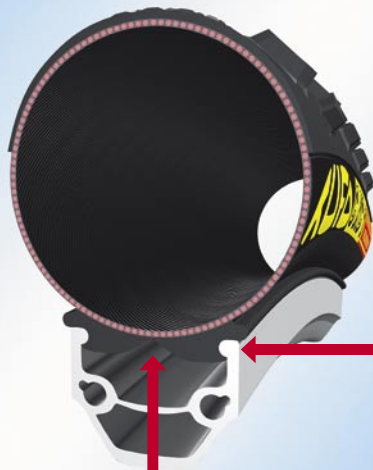
How does **TUFO** tubular clincher work



Tubular clincher on a rim before inflation



Tubular clincher on a rim after inflation



Thanks to the unique installation
of tubular clincher on a rim

- excellent adaptability to terrain
- very good shock absorption even
at higher inflation pressure and
locked fork
- protection of the rim against
damage

rubber on rubber contact

Thanks to the unique closed
tubular construction

- riding quality equals to tubulars
- even at lower inflation pressure tire
does not "float"
- the ride is fast, dynamic and light,
while comfort is maintained
- the rim sidewalls are not under
stress, not even at high inflation
pressure

closed tire construction

Thanks to the unique installation of tubular clincher on a rim and closed tubular construction



- pinch flats are totally eliminated!
- safe handling in case of flats without affecting the stability of a rider
- relatively fast and safe ride on a flat tire

WWW.TUFO.COM

► Thanks to the dynamic properties and toughness of casing together with tread compound and tread pattern

- very fast ride with great track stability on dry terrain
- excellent adhesion on wet pavement
- at highest inflation pressure, comfortable and fast ride on a pavement
- low rolling resistance

Thanks to the unique compact construction



- easy and fast repair of flats with TUFO sealant on a trail without dismantling tire or wheel



- in case of big tire cuts, you can carry a spare foldable tire for an easy exchange



- very fast installation and dismantling without any tools

Thanks to the removable valve core

- easy replacement of damaged valve core
- valve extension can be used to adjust the valve stem length for any rim, with valve core always on top



► Thanks to the construction of the casing

- low weight
- increased puncture resistance in this weight category
- long retention of inflation pressure